

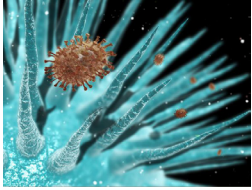


Roodlane Medical -

News about the 2010/2011 influenza season

ALL OUR PREVIOUS NEWSLETTERS CAN BE FOUND ON OUR WEBSITE:

WWW.ROODLANE.CO.UK



Overview of current "swine flu" virus position.

The most recent surveillance data from the Health Protection Agency indicates a resurgence in various flu viruses this year, with the most common flu being the H1N1 strain, or "swine flu" virus.

Once again, it is fortunate that employees with underlying health issues are not at a high risk of catching the "swine flu" virus, although they would represent a high risk in terms of complications associated with H1N1 if they do catch it.

Even though in most cases the illness and associated symptoms are mild, it is important that as many people as possible are immunised with the influenza vaccine. This year's vaccines contain an inactivated strain of the H1N1 "swine flu" virus which triggers the immune system to recognise and destroy the live H1N1 virus if contracted.

It is also important that pregnant women are vaccinated because this group is at an increased risk of serious illness due to influenza.

What can Roodlane Medical do to assist you and your business in respect of the "swine flu" resurgence?

Roodlane can prescribe antivirals such as Tamiflu for all patients with a flu-like illness, particularly for those in high risk groups. High risk groups include those employees over the age of 65 or those with:

- Chronic respiratory disease - including those with asthma where the individual requires continuous or repeated use of inhaled or systemic steroids, or where previous exacerbations have required a hospital admission.
- Chronic heart disease.
- Chronic renal disease.
- Chronic liver disease.
- Chronic neurological disease.
- Immunosuppression.
- Diabetes mellitus.



There is also the opportunity to offer prophylaxis to those in the high risk groups who have not yet been vaccinated.

Who can I contact to discuss flu vaccinations for my business?

If you would like to discuss the above summary, book an influenza vaccination appointment, or discuss block vaccination bookings for your employees, please contact a member of the Roodlane Medical client relationship management team, these being:

Elliott Hurst
Commercial Director
020 7847 6579
elliott.hurst@roodlane.co.uk

Samantha Ayers
Business Relationship Manager
020 7847 6562
sam.ayers@roodlane.co.uk

Kerry-Anne Dale
Business Relationship Manager
020 7847 6591
kerry-anne.dale@roodlane.co.uk

CITY OF LONDON

58 New Broad Street,
London, EC2M 1JJ

CANARY WHARF

Unit 5, Mackenzie Walk,
25 Cabot Square,
London, E14 4QW

LONDON BRIDGE

4th Floor, Magdalen House,
136-148 Tooley Street,
London, SE1 2TU

GLASGOW

151 West George Street,
Glasgow, G2 2JJ

0845 437 0691
www.roodlane.co.uk